

CuteLink Voice Over Fiber Multiplexer

- CL-VOF4401 OP-4*FXO/FXS+4*E1+ETH+Rs232
- CL-VOF8401 OP-8*FXO/FXS+4*E1+ETH+Rs232
- CL-VOF15400 OP-15*FXO/FXS+4*E1+ETH+Rs232
- CL-VOF30400 OP-30*FXO/FXS+4*E1+ETH+Rs232

CuteLink 4/8*FXO/FXS+4E1+ETH+Rs232 Over Fiber Mux.

CL-VOF4401/8401

Product Overview

CL-VOF4401/8401 Voice Over Fiber multiplexer is a point-to-point



optical transmission equipment developed based on FPGA Chips, realizing 4 E1 and 4*100M Ethernet,4-8 voice channels(FXO,FXS.),4/8 RS232 channel . It is perfect monitoring and alarm, high integration rate, low power consumption, steady performance , convenient used. It is suitable in business for communication operator, government and all kinds of big group.

Device Feature

- Developed from the integrated circuit with our own property right.
- Provide 4 E1 interface (optional)
- Provide 100M Ethernet interface (optional)
- Provide RS232 channels, support rate of 300-115200bps (optional).
- 10M/100M Ethernet interface, full duplex/half duplex auto-adaptable, support VLAN. Each Ethernet interface support AUTO-MDIX (crossed or straight line self-adaptable)
- Provide 4/8 voice interface, support caller ID function and anti-polarity charge function. Support each site signal becoming to fit
- Support FXO and FXS, FXO connect with SPC Exchange, FXS connect with telephone.

Specification

Protocol: G.703, G.704, G.736, G.823, I.431 IEEE802.3

E1 interface:

Impedance: 75Ω, physical interface BNC

120Ω, physical interface RJ45

Interface rate: 2.048Mbps

Coding: N*64K(1-32)

Jitter tolerance: In accord with protocol G.823

Output jitter: < 0.05UI

Fiber interface

Rate: 155Mbps

Line code: 1B1C

Wavelength: 850nm/1310nm/1550nm

Connector: FC/SC

Distance: 0-120Km

Ethernet interface:

Data Rate: 10/100Mbps auto-negotiation

Standard: Compatible with IEEE802.3

Connector: RJ-45

Full duplex auto-negotiation

FXO/FXS Voice Interface:

FXS

Ring voltage: 75V

Ring frequency: 25HZ

2 line input impedance: 600Ω(hanging off)

Wastage: 40 db

FXO

Ring voltage: 35V

Ring frequency: 17HZ-60HZ

2 line input impedance: 600Ω(hanging off)

Ringing detecting voltage: 35V

Wastage: 40 db

RS232 Interface:

The physical interface type is RJ45.

Provides 2 RS232 transmission channels;

Transmission Rate: 19.2k~115.2k bps

Transmitting mode: Fully duplexing

Power supply:

Stand alone: 85V~264V AC input, 5V/1A output

-36V~-72V DC input, 5V/1A output

Structure:

Stand alone: 19" 1U standard

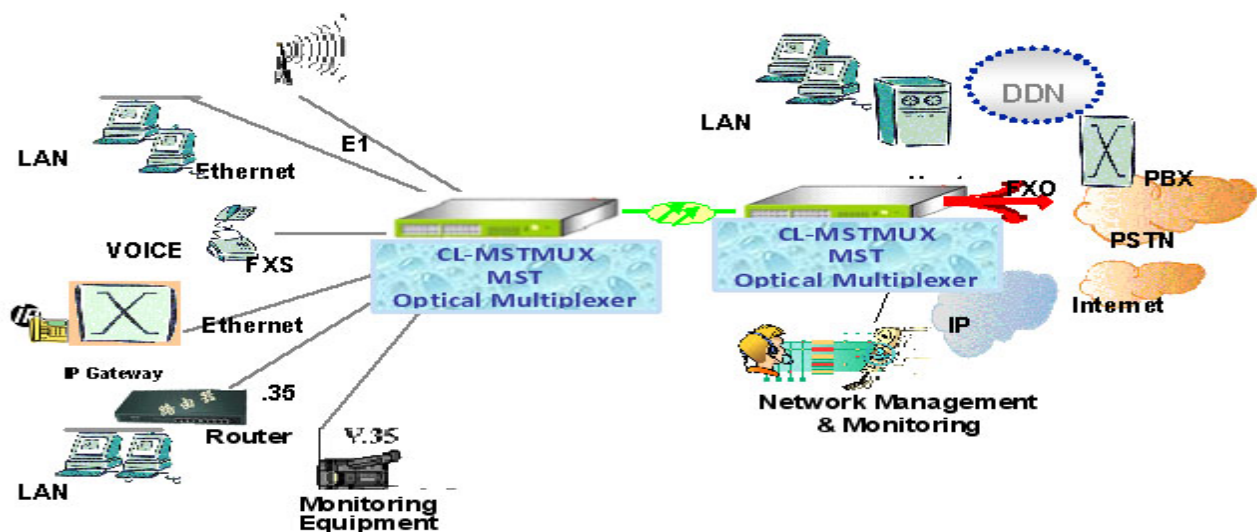
Other Specification:

Operation temperature: 0°C~50°C

Storage temperature: -20°C~80°C

Humidity: 5%~90% (no condensation)

Application 1



CuteLink 15/30*FXO/FXS+4E1+ETH+Rs232 Over Fiber Mux.

CL-VOF15400/30400

Product Overview

CL-VOF15400/30400 Voice Over Fiber multiplexer is a point-to-point optical transmission equipment developed based on FPGA Chips, realizing 4 E1 channels and 1*100M Ethernet, 15 voice channels(FXO,FXS,), 2 RS232 channel . It is perfect monitoring and alarm, high integration rate, low power consumption, steady performance , convenient used. It is suitable in business for communication operator, government and all kinds of big group.



Device Feature

- Developed from the integrated circuit with our own property right.
- Provide 4 E1 interface (optional)
- Provide 100M Ethernet interface (optional)
- Provide RS232 channels, support rate of 300-115200bps (optional).
- 10M/100M Ethernet interface, full duplex/half duplex auto-adaptable, support VLAN. Each Ethernet interface support AUTO-MDIX (crossed or straight line self-adaptable)
- Provide 15/30 voice interface, support caller ID function and anti-polarity charge function. Support each site signal becoming to fit
- Support FXO and FXS, FXO connect with SPC Exchange, FXS connect with telephone.

Specification

Protocol: G.703, G.704, G.736, G.823, I.431 IEEE802.3

E1 interface:

Impedance: 75Ω, physical interface BNC

120Ω, physical interface RJ45

Interface rate: 2.048Mbps

Coding: N*64K(1-32)

Jitter tolerance: In accord with protocol G.823

Output jitter: < 0.05UI

Fiber interface

Rate: 155Mbps

Line code: 1B1C

Wavelength: 850nm/1310nm/1550nm

Connector: FC/SC

Distance: 0-120Km

FXO/FXS Voice Interface:

FXS

Ringing voltage: 75V

Ringing frequency: 25HZ

2 line input impedance: 600Ω(hanging off)

Wastage: 40 db

FXO

Ringing voltage: 35V

Ringing frequency: 17HZ-60HZ

2 line input impedance: 600Ω(hanging off)

Ringing detecting voltage: 35V

Wastage: 40 db

Power supply:

Stand alone: 85V~264V AC input, 5V/1A output

-36V~-72V DC input, 5V/1A output

Structure:

Stand alone: 19" 1U standard

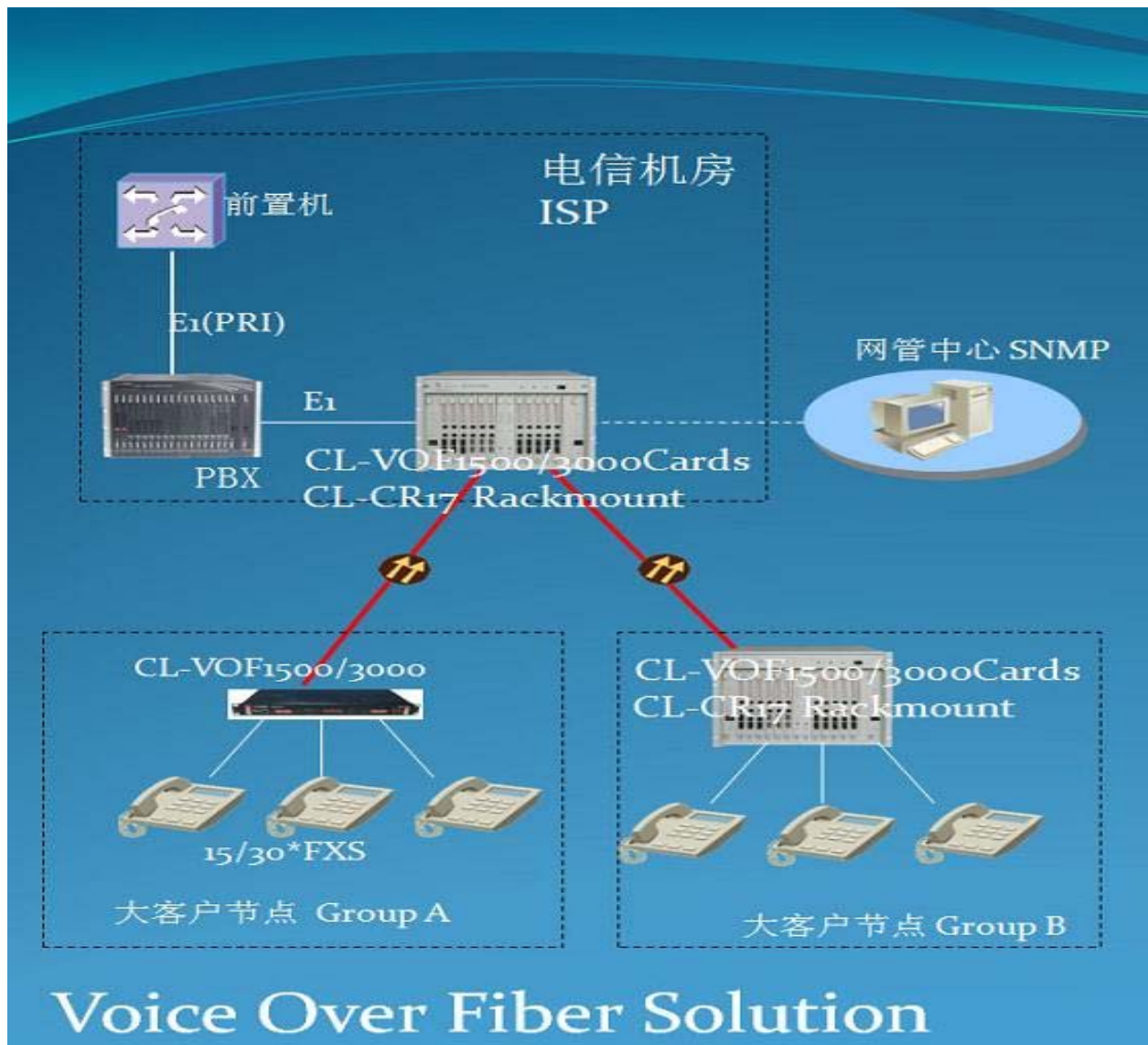
Other Specification:

Operation temperature: 0°C~50°C

Storage temperature: -20°C~80°C

Humidity: 5%~90% (no condensation)

Application 2



Model

Model	Description
CL-VOF4401	OP-4*FXO/FXS+4*E1+ETH+Rs232
CL-VOF8401	OP-8*FXO/FXS+4*E1+ETH+Rs232
CL-VOF15400	OP-15*FXO/FXS+4*E1+ETH+Rs232
CL-VOF30400	OP-30*FXO/FXS+4*E1+ETH+Rs232