

CuteLink Voice Over E1 (PCM) Multiplexer

- **CL-VOE4420** E1-4*FXO/FXS+4*ETH+2Rs232
- **CL-VOE8420** E1-8*FXO/FXS+4*ETH+2Rs232
- **CL-VOE1500** E1-15*FXO/FXS
- **CL-VOE3000** E1-30*FXO/FXS

CuteLink 4/8*FXO/FXS+4*ETH+2Rs232 Over 1*E1 Mux.

CL-VOE4420/8420

Product Overview

CL-VOE4420/8420 Voice Over 1*E1 multiplexer is a



point-to-point transmission equipment developed based on FPGA Chips, realizing 4*10/100Base-Tx Ethernet,4/8voice channels(FXO,FXS.),2 RS232 channel . It is perfect monitoring and alarm, high integration rate, low power consumption, steady performance , convenient used. It is suitable in business for communication operator, government and all kinds of big group.



Device Feature

- Developed from the integrated circuit with our own property right.
- Provide 4 100M Ethernet interface (optional)
- Provide 2 RS232 channels, support rate of 300-115200bps (optional).
- Each 10M/100M Ethernet interface, full duplex/half duplex auto-adaptable, support VLAN. Each Ethernet interface support AUTO-MDIX (crossed or straight line self-adaptable)
- Provide 4/8 voice interface, support caller ID function and anti-polarity charge function. Support each site signal becoming to fit
- Support FXO and FXS, FXO connect with SPC Exchange, FXS connect with telephone.

Specification

Protocol: G.703, G.704, G.736, G.823, I.431 IEEE802.3

E1 interface:

Impedance: 75Ω, physical interface BNC

120Ω, physical interface RJ45

Interface rate: 2.048Mbps

Coding: N*64K(1-32)

Jitter tolerance: In accord with protocol G.823

Output jitter: < 0.05UI

Ethernet interface:

Data Rate: 10/100Mbps auto-negotiation

Standard: Compatible with IEEE802.3

Connector: RJ-45

Full duplex auto-negotiation

FXO/FXS Voice Interface:

FXS

Ringing voltage: 75V

Ringing frequency: 25HZ

2 line input impedance: 600Ω(hanging off)

Wastage: 40 db

FXO

Ringing voltage: 35V

Ringing frequency: 17HZ-60HZ

2 line input impedance: 600Ω(hanging off)

Ringing detecting voltage: 35V

Wastage: 40 db

RS232 Interface:

The physical interface type is RJ45.

Provides 2 RS232 transmission channels;

Transmission Rate: 19.2k~115.2k bps

Transmitting mode: Fully duplexing

Power supply:

Stand alone: 85V~264V AC input, 5V/1A output

-36V~-72V DC input, 5V/1A output

Structure:

Stand alone: 19" 1U standard

Other Specification:

Operation temperature: 0°C~50°C

Storage temperature: -20°C~80°C

Humidity: 5%~90% (no condensation)

CuteLink 15/30*FXO/FXS Over 1*E1 Mux.

CL-VOE1500/3000

Product Overview



CL-VOE1500/300 Voice Over 1*E1

multiplexer is a point-to-point optical transmission equipment developed based on FPGA Chips,15/30 voice channels(FXO,FXS,). It is perfect monitoring and alarm, high integration rate, low power consumption, steady performance , convenient used. It is suitable in business for communication operator, government and all kinds of big group.

Device Feature

- Developed from the integrated circuit with our own property right.
- Provide 15/30 voice interface, support caller ID function and anti-polarity charge function. Support each site signal becoming to fit
- Support FXO and FXS, FXO connect with SPC Exchange, FXS connect with telephone.

Specification

Protocol: G.703, G.704, G.736, G.823, I.431 IEEE802.3

E1 interface:

Impedance: 75Ω, physical interface BNC

120Ω, physical interface RJ45

Interface rate: 2.048Mbps

Coding: N*64K(1-32)

Jitter tolerance: In accord with protocol G.823

Output jitter: < 0.05UI

FXO/FXS Voice Interface:

FXS

Ringing voltage: 75V

Ringing frequency: 25HZ

2 line input impedance: 600Ω(hanging off)

Wastage: 40 db

FXO

Ringing voltage: 35V

Ringing frequency: 17HZ-60HZ

2 line input impedance: 600Ω(hanging off)

Ringing detecting voltage: 35V

Wastage: 40 db

Power supply:

Stand alone: 85V~264V AC input, 5V/1A output

-36V~-72V DC input, 5V/1A output

Structure:

Stand alone: 19" 1U standard

Other Specification:

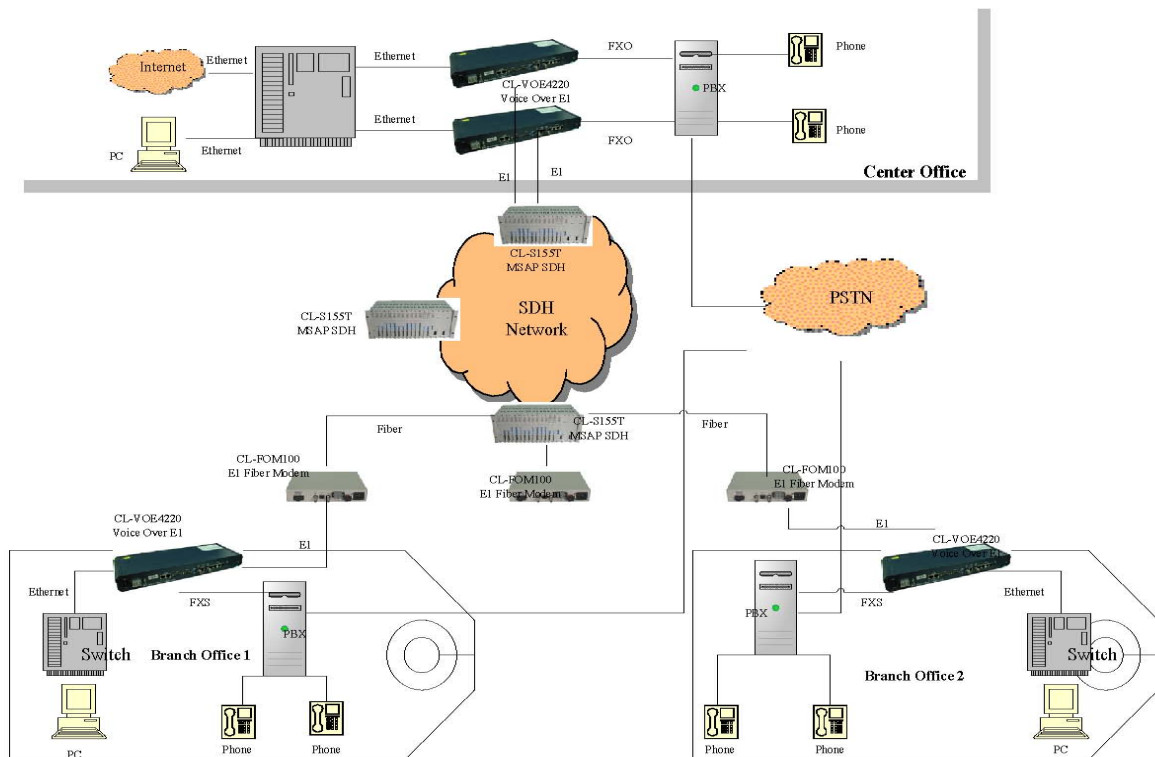
Operation temperature: 0°C~50°C

Storage temperature: -20°C~80°C

Humidity: 5%~90% (no condensation)

Application

Voice Over SDH Network Solution for Bank, Army or Government



Model

Model	Description
CL-VOE4402	E1--4*10/100Base-T+4*FXO/FXS+2*Rs232
CL-VOE8402	E1--4*10/100Base-T+8*FXO/FXS+2*Rs232
CL-VOE1500	E1--15*FXO/FXS
CL-VOE3000	E1--30*FXO/FXS