

CuteLink Fiber Optical Modem Multiplexer (FOMMUX)

CL-FOMMUX

Device Overview

CL-FOMMUX modular optical transmission equipments is able to multiple E1, V.35 and Ethernet in any combination form into a set of optical fiber with optical



interface hot backup for transmission without any interference. There are four slots, each of which can be inserted with a piece of interface card. Currently, the available interface cards include: E1, V.35 and Ethernet port interface cards. The optical interface offers hot backup function. Users can choose and buy double-optical interface equipments according to their requirements. The master optical interface is near to the bottom of equipment, while the auxiliary optical interface is near to the cover plate of equipment.



Device Feature

- Merges the Ethernet and time-division multiplex (TDM) transmission to the same pipe.
- .Favorable optic/electric specification provided by integral optic reception/transmission module
- Offering support 1-4E1,1-4V.35 and 1-4Ethernet through the fiber
- E1 Line code: compliant to G.703 G.704, E1 interface adopt digital phase locked and clock extracted technique,The standard E1 interfaces comply with ITU-T G.703, G.823 and G.742.

- Perfect alarm function display remote status
- Complete alarming function
- Single-board architecture design
- Support SNMP Network manager system
- Supports either auto-negotiation or hardware configuration selection of the Ethernet operation.
- The Ethernet interface supports VLAN and Flow Control function.
- Real-time Monitoring and all necessary alarm display for easy management.
- Supports Local and Remote Loop-back Test.
- Extends the fiber link up to 120 km without any repeater.
- Compact single board Terminal.
- 100~220V Ac and -48VDC power supply is optional.

Specification

1. Power
AC Input: 100~250V DC Input: -48V(-32~-72)
Power Consumption: ≤30W
2. E1 interface
Compliance with ITU-T G.703
Data rate: N*64K(Framed)2.048Mbps (Unframed)
Impedance: 75ohm(BNC)/120ohm(BLANCE)
Line Code: HDB3
Frequency deflection: 2.048MHz ±100PPM
Jittering: compliance with ITU-T G.742、G.823
3. Fiber interface
Rate: 155Mbps
Line code: 1B1C
Wavelength: 850nm/1310nm/1550nm
Connector: FC/SC
Distance: 0-120Km
4. Ethernet ports
Compliant with: IEEE802.3
Rate: 10/100Mbps Full/Half duplex auto-negotiation
Physical connector: RJ45
MDI/MDI-x auto-negotiation
5. V.35 interface
Compliant with V.35 standard

Rate: $n \times 64\text{Kbps}$, $n=132$

Physical connector: DB25 female jack DCE & DTE optional

6. Environment

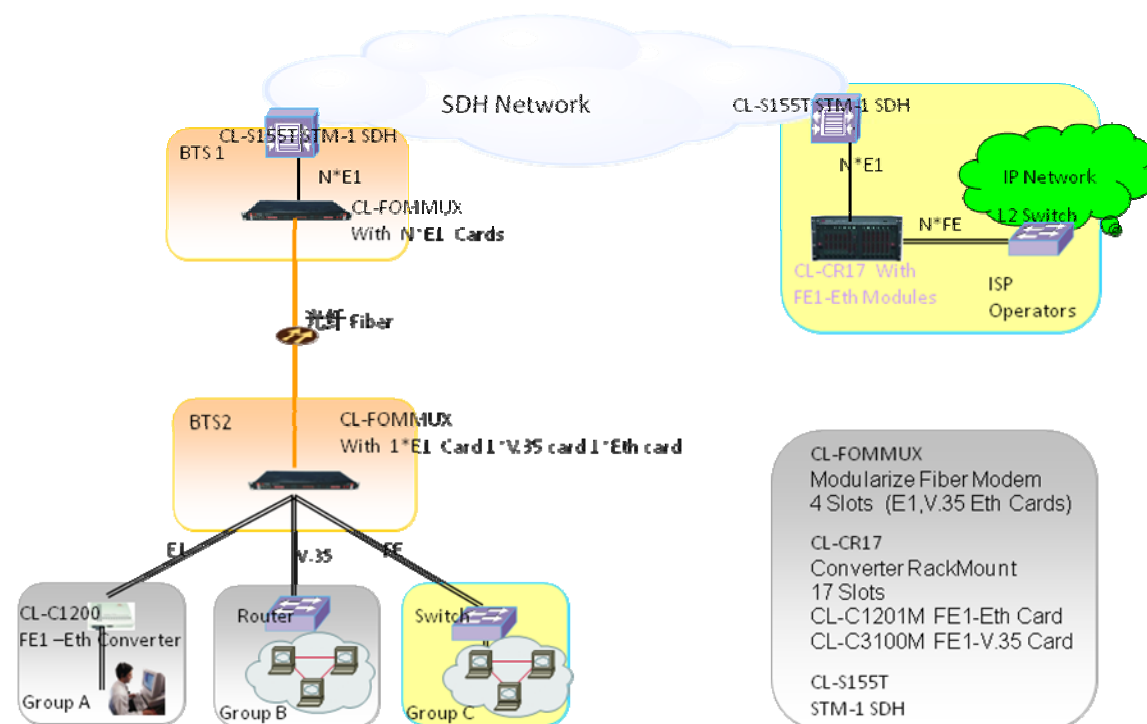
Operation Temperature: 0~500

Operation Relative Humidity: 20~90%

Store Temperature: -20~65

Store Relative Humidity: 10~95%

Application



Model

Model	Optional
CL-FOMMUX	Modularize Fiber Modem Mainboard, Optical interface, 1310nm. 20-40km, Support 1+1Backup optical interface, AC+DC, 4 Module Slots, FE1 Card, V.35 Card, Ethernet Card, Support FE1-V.35, V.35-Eth, FE1-Eth
	FE1 Card N*64K
	V.35 Card
	1+1 Optical Redundancy Backup module, FC 40Km,
	Ethernet Card