

Device Feature

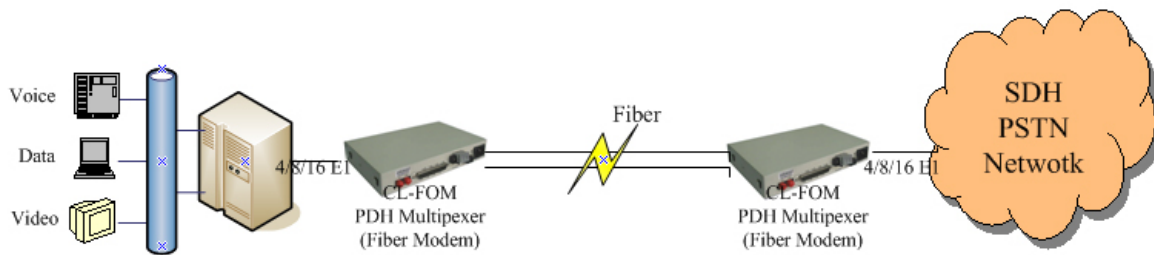
- Developed from the integrated circuit with our own property right.
- Favorable optic/electric specification provided by integral optic reception/transmission module
- Offering 4/8/16E1 (2.048Mbps) interfaces
- Line code: compliant to G.703, E1 interface adopt digital phase locked and clock extracted technique
- An official phone interface is optional, not occupy E1 channel
- Offering an asynchronous data-transmitting RS232 interface and a management RS232 interface
- Perfect alarm function display remote status
- up to 120Km distance without repeater
- Complete alarming function
- Single-board architecture design
- Support SNMP Network manager system

Specification

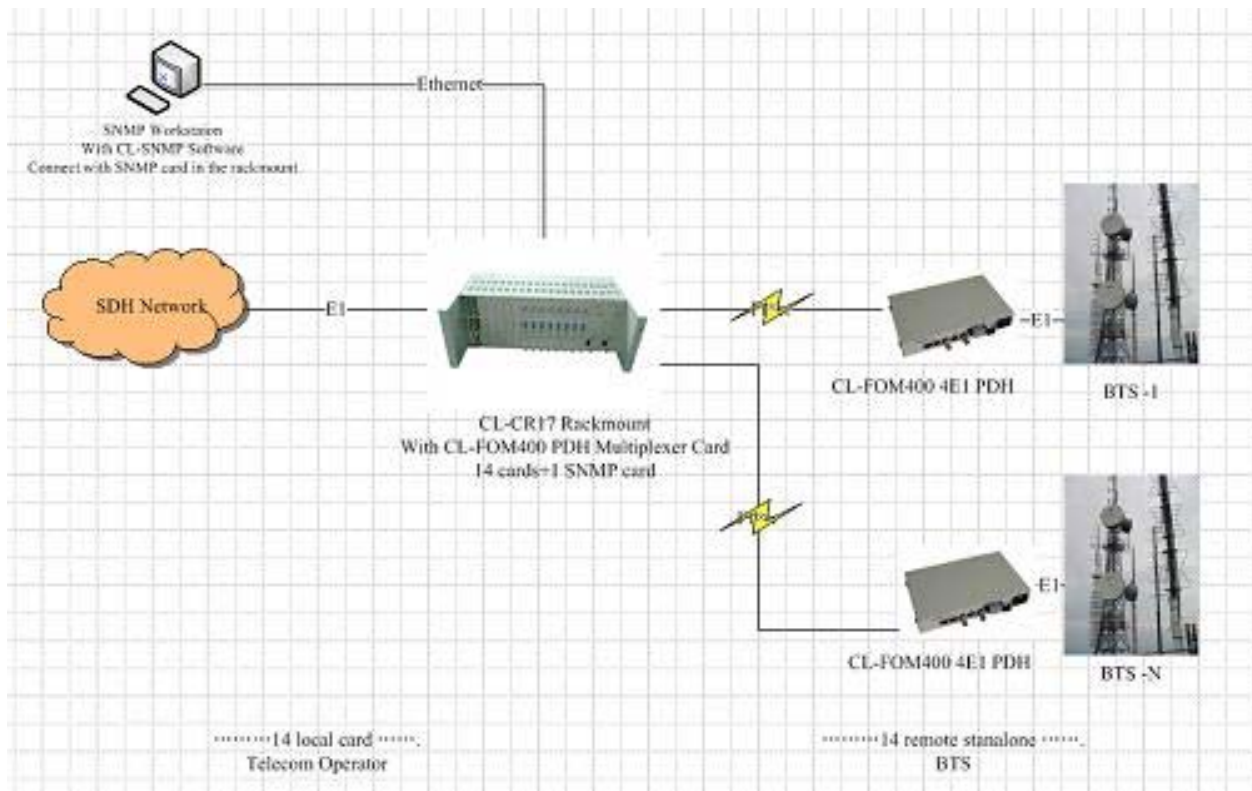
1. Power
AC Input: 100~250V DC Input: -48V(-32~-72)
Power Consumption:≤30W
2. E1 interface
Compliance with ITU-T G.703
Data rate: 2.048Mbps
Impedance: 75ohm(BNC)/120ohm(BLANCE)
Line Code: HDB3
Frequency deflection: 2.048MHz ±100PPM
Jittering: compliance with ITU-T G.742、G.823
3. Fiber interface
Rate: 155Mbps
Line code: 1B1C
Wavelength: 850nm/1310nm/1550nm
Connector: FC/SC
Distance: 0-120Km

4. RS232 Interface :
 - Transmission Rate: 19.2k~115.2k bps
 - Transmitting mode: Fully duplexing
5. Environment
 - Operation Temperature: 0~500
 - Operation Relative Humidity: 20~90%
 - Store Temperature: -20~65
 - Store Relative Humidity: 10~95%

Application



Fiber Modem For BTS



CL-FOM4100/8100/16100 4/8/16E1+Eth+Rs232+SNMP+OW PDH Mux.

Device Overview

CL-FOM4100/8100/16100
4/8/16E1+100Mb Ethernet PDH
(Plesiochronous Digital Hierarchy)
which was used in exchanger for
long distance transmission, and



platform of mobile telecommunication, pager transmission station ect., which was used in mini-medium column and point to point products with fiber supporting, the equipment adopted powerful function and expert digital repeating-connection chips which integrated all digital and logical function in the equipment so that improved the performance and reduced the cost of products, the completed-equipment with good performance, stable operation, low loss, strong integration capacity, small bulk, easy installation and maintenance. Standalone and Rack mount module are both available..



Device Feature

- Developed from the integrated circuit with our own property right.
- Favorable optic/electric specification provided by integral optic reception/transmission module
- Offering 4/8/16E1 (2.048Mbps) interfaces and 1 10/100Base-T Ethernet
- E1 Line code: compliant to G.703, E1 interface adopt digital phase locked and

clock extracted technique

- An official phone interface is optional, not occupy E1 channel
- Offering an asynchronous data-transmitting RS232 interface and a management RS232 interface
- Perfect alarm function display remote status
- up to 120Km distance without repeater
- Complete alarming function
- Single-board architecture design
- Support SNMP Network manager system

Specification

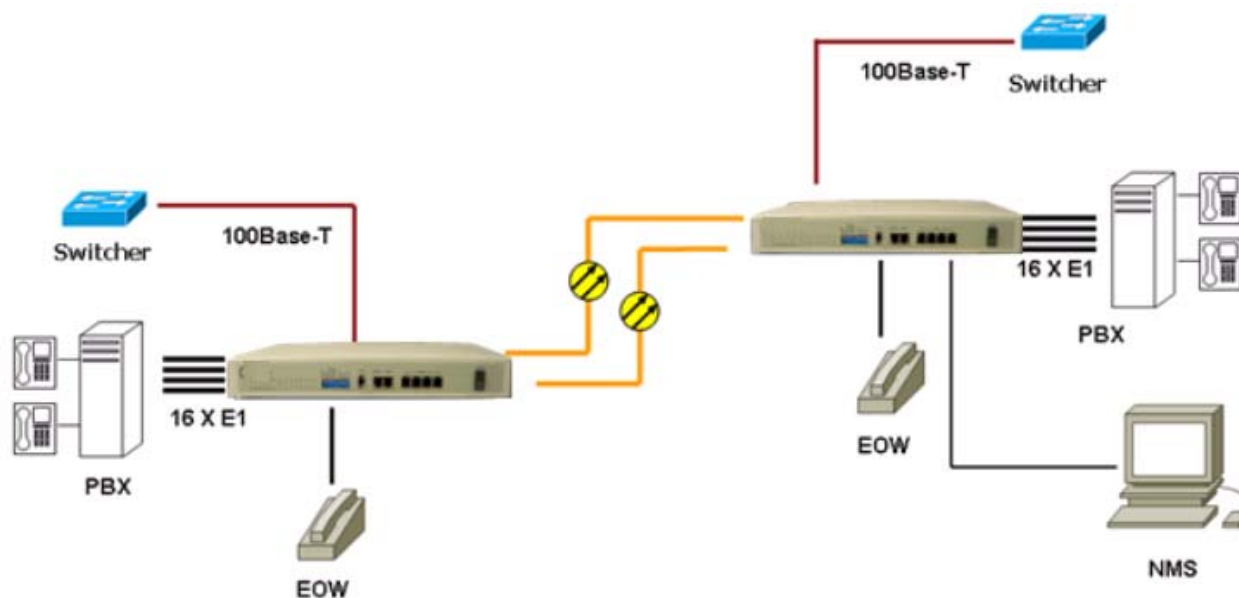
1. Power
AC Input: 100~250V DC Input: -48V(-32~-72)
Power Consumption: ≤30W
2. E1 interface
Compliance with ITU-T G.703
Data rate: 2.048Mbps
Impedance: 75ohm(BNC)/120ohm(BLANCE)
Line Code: HDB3
Frequency deflection: 2.048MHz ±100PPM
Jittering: compliance with ITU-T G.742、G.823
3. Fiber interface
Rate: 155Mbps
Line code: 1B1C
Wavelength: 850nm/1310nm/1550nm
Connector: FC/SC
Distance: 0-120Km
4. Ethernet ports
Compliant with: IEEE802.3
Rate: 10/100Mbps Full/Half duplex auto-negotiation
Physical connector: RJ45
MDI/MDI-x auto-negotiation
Ethernet port: 1 ports
5. RS232 Interface :
Transmission Rate: 19.2k~115.2k bps
Transmitting mode: Fully duplexing
6. Environment
Operation Temperature: 0~50O

Operation Relative Humidity: 20~90%

Store Temperature: -20~65

Store Relative Humidity: 10~95%

Application



Model

Model	Optional
CL-FOM400	4E1 PDH Standalone (Fiber Modem)
CL-FOM401	4E1 PDH 19inch (Fiber Modem)
CL-FOM801	8E1 PDH (Fiber Modem)
CL-FOM1600	16E1 PDH (Fiber Modem)
CL-FOM4100	4E1+Eth+Rs232+OW+SNMP PDH (Fiber Modem)
CL-FOM8100	8E1+Eth+Rs232+OW+SNMP PDH (Fiber Modem)
CL-FOM16100	16E1+Eth+Rs232+OW+SNMP PDH (Fiber Modem)