

CuteLink TDM Over IP Converter

- **CL-EIP1200** 1*E1 OVER 4*10/100Base-T
- **CL-EIP2400** 2*E1 OVER 4*10/100Base-T
- **CL-EIP4400** 4*E1 OVER 4*10/100Base-T
- **CL-EIP1110** 1*E1 OVER 10/100Base-T+OPTICAL 10/100Base-Fx
- **CL-EIP2110** 2*E1 OVER 10/100Base-T+OPTICAL 10/100Base-Fx
- **CL-EIP4110** 4*E1 OVER 10/100Base-T+OPTICAL 10/100Base-Fx

CuteLink 1/2/4E1 Over 4*10/100Base-Tx TDM Over IP Converter

CL-EIP1400/2400/4400

Product Overview

CL-EIP1400/2400/4400 converter is Connecting traditional circuit-switched service as well as packet-switched data service over IP networks has become an attractive alternative to sufficiently using IP networks today. Efficiently combining TCP/IP technology together with TDM technology, TDM over IP circuit simulator - TDMoP. It enables synchronous E1 signals delivered over broadband IP networks, takes the advantage of the low cost data transmission networks, seamlessly connects with all the traditional TDM terminals, that is, accommodates the traditional TDM services, such as PBX, modem, fax and video into IP networks.



Device Feature

- Support mixed transmission of up to 1/2/4*E1 circuit traffic and high speed IP data traffic
- Support framed, non-framed E1 signal transmission
- High accuracy and stability of clock with closed-loop PLL technology
- Fast clock-locking, easy synchronization
- QOS management, ensuring high quality of TDM traffic

- High reliability, long MTBF
- Uplink is Ethernet, Downlink is E1
- 4Ports 10/100Base-T Ethernet Interface, Support Vlan
- Configure by CLI: RS-232/v.24, Telnet
- Easy to use, plug in and play

Specification

Protocol: G.703, G.704, G.736, G.823, I.431 IEEE802.3

E1 interface:

Impedance: 75Ω, physical interface BNC

120Ω, physical interface RJ45

Standards ITU-T Rec. G.703, G.704, G.706, G.732, G.823

Signaling Framed & Non-framed, CCS, CAS

Nominal Data Rate 2.048 Mbps

Line Code HDB3

Receive Signal Level Without LTU: 0 to -15dB

With LTU: 0 to -43dB

Ethernet interface:

Data Rate: 10/100Mbps auto-negotiation

Standard: Compatible with IEEE802.3

Connector: RJ-45

4 Ports Support Vlan

Full duplex auto-negotiation

RS232 Interface:

The physical interface type is RJ45.

Provides 2 RS232 transmission channels;

Transmission Rate: 19.2k~115.2k bps

Transmitting mode: Fully duplexing

Power supply:

Stand alone: 85V~264V AC input, 5V/1A output
-36V~-72V DC input, 5V/1A output

Structure:

Stand alone: 19" 1U standard

Other Specification:

Operation temperature: 0°C~50°C

Storage temperature: -20°C~80°C

Humidity: 5%~90% (no condensation)

CuteLink 1/2/4E1 Over 4*10/100Base-Fx TDM Over IP Converter

CL-EIP1110/2110/4110

Product Overview

CL-EIP1100/2110/4110 converter is Connecting traditional circuit-switched service as well as packet-switched data service over IP networks has become an attractive alternative to sufficiently using IP networks today. Efficiently combining TCP/IP technology together with TDM technology, TDM over IP circuit simulator - TDMoP. It enables synchronous E1 signals delivered over broadband IP networks, takes the advantage of the low cost data transmission networks, seamlessly connects with all the traditional TDM terminals, that is, accommodates the traditional TDM services, such as PBX, modem, fax and video into IP networks.



Device Feature

- Support mixed transmission of up to 1/2/4*E1 circuit traffic and high speed IP data traffic

- Support framed, non-framed E1 signal transmission
- High accuracy and stability of clock with closed-loop PLL technology
- Fast clock-locking, easy synchronization
- QOS management, ensuring high quality of TDM traffic
- High reliability, long MTBF
- Uplink is Ports 10/100Base-Fx, Downlink is E1
- 1*Ports 10/100Base-T and 1*Ports 10/100Base-Fx Ethernet Interface, Support Vlan
- Configure by CLI: RS-232/v.24, Telnet
- Easy to use, plug in and play

Specification

Protocol: G.703, G.704, G.736, G.823, I.431 IEEE802.3

E1 interface:

Impedance: 75Ω, physical interface BNC

120Ω, physical interface RJ45

Standards ITU-T Rec. G.703, G.704, G.706, G.732, G.823

Signaling Framed & Non-framed, CCS, CAS

Nominal Data Rate 2.048 Mbps

Line Code HDB3

Receive Signal Level Without LTU: 0 to -15dB

With LTU: 0 to -43dB

Ethernet interface:

Data Rate: 10/100Mbps auto-negotiation

Standard: Compatible with IEEE802.3

Connector: RJ-45

Full duplex auto-negotiation

Fiber interface (Optical Ethernet)

Rate: 155Mbps

Line code: 1B1C

Wavelength: 850nm/1310nm/1550nm

Connector: FC/SC

Distance: 0-120Km

RS232 Interface:

The physical interface type is RJ45.

Provides 2 RS232 transmission channels;

Transmission Rate: 19.2k~115.2k bps

Transmitting mode: Fully duplexing

Power supply:

Stand alone: 85V~264V AC input, 5V/1A output

-36V~-72V DC input, 5V/1A output

Structure:

Stand alone: 19" 1U standard

Other Specification:

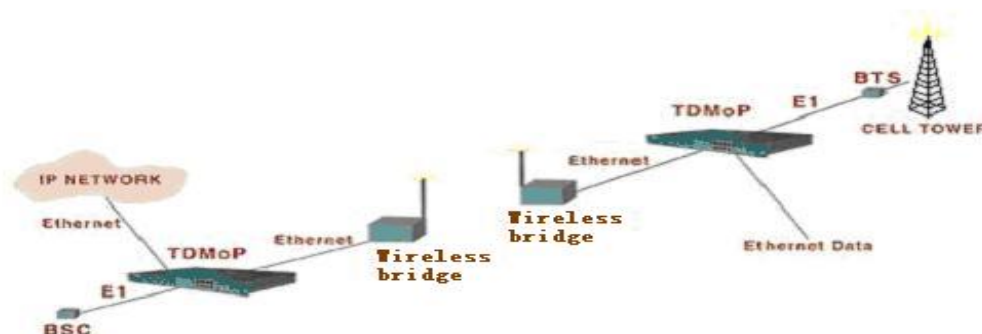
Operation temperature: 0°C~50°C

Storage temperature: -20°C~80°C

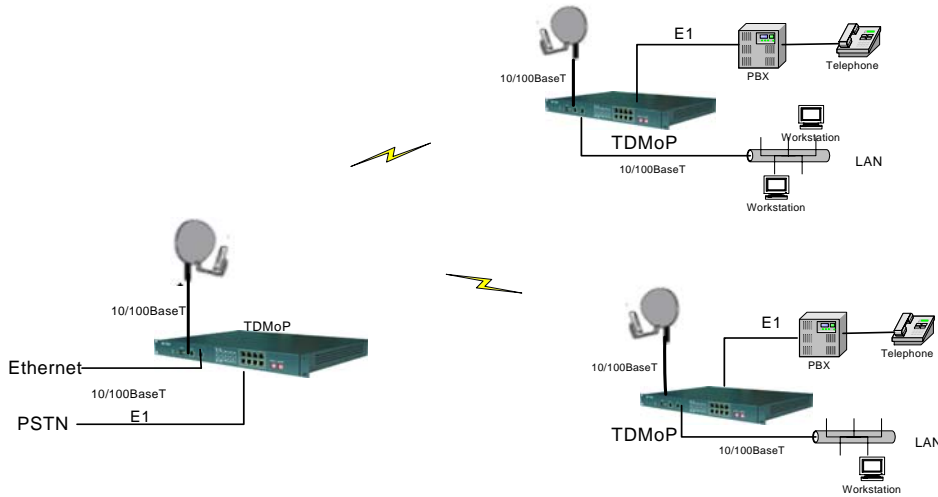
Humidity: 5%~90% (no condensation)

Application

1. Wireless application

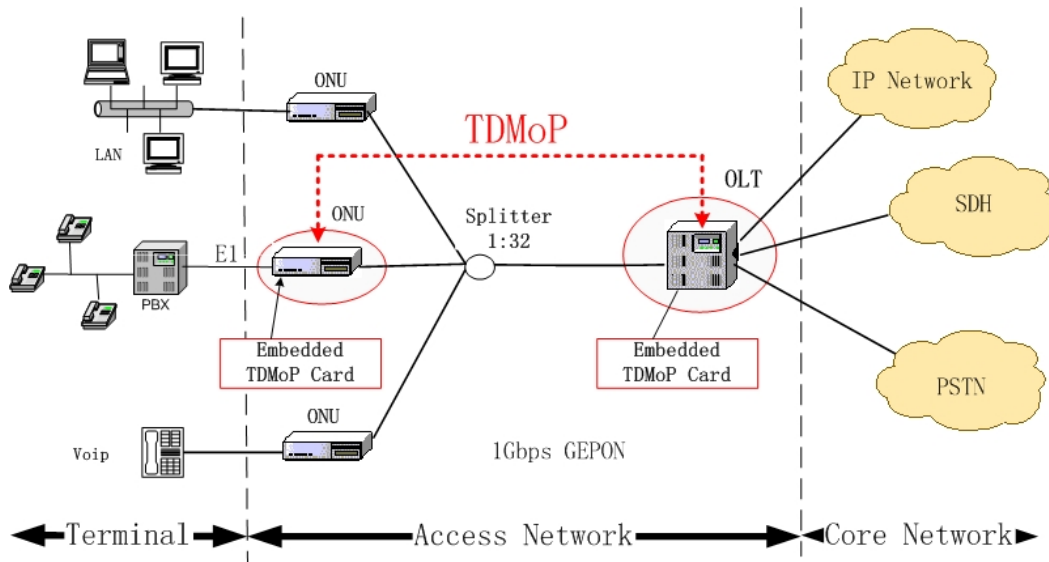


E1 link between base station, base station control and switch center



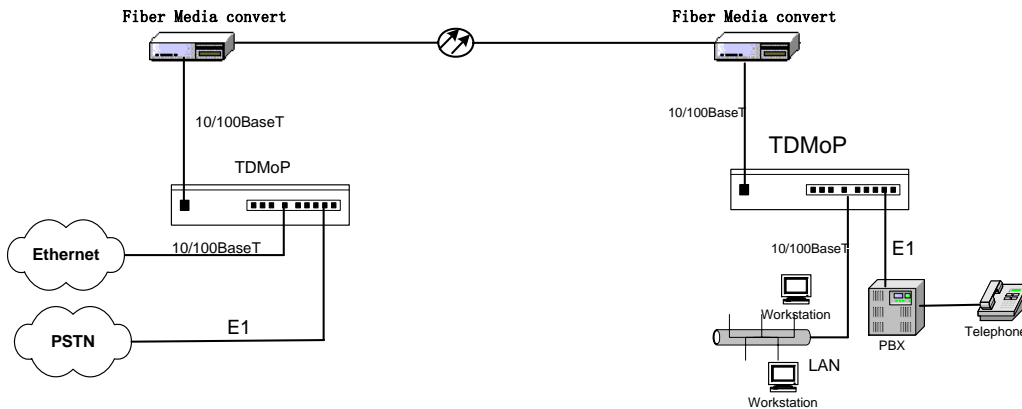
Transmit voice and data using with 5.8 G WLAN

2. The application of E1 simulate in optical fiber circuit

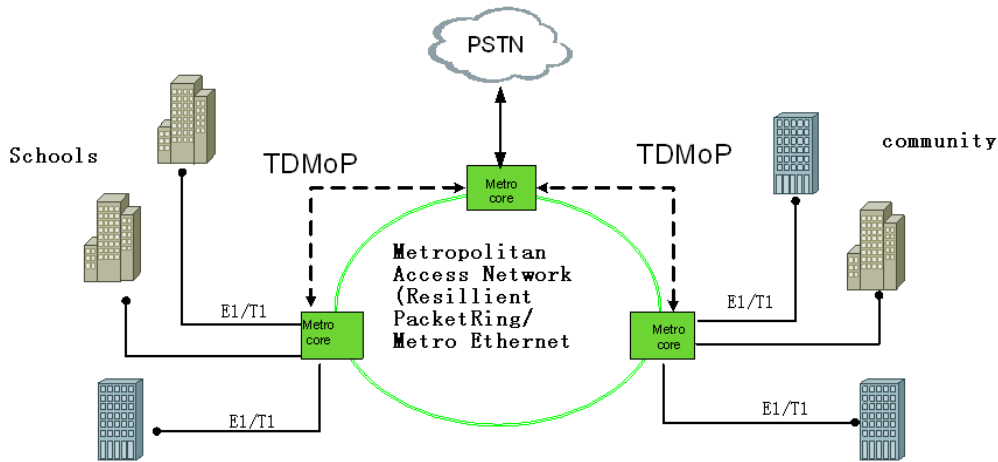


E1 circuit simulate in GEPON system

3. Transmit voice and data synchronously in optical fiber circuit



4. The application of TDMoP in MAN



Model

Model	Description
CL-EIP1200	1*E1 OVER 4*10/100Base-T
CL-EIP2400	2*E1 OVER 4*10/100Base-T
CL-EIP4400	4*E1 OVER 4*10/100Base-T
CL-EIP1110	1*E1 OVER 10/100Base-T+OPTICAL 10/100Base-Fx
CL-EIP2110	2*E1 OVER 10/100Base-T+OPTICAL 10/100Base-Fx
CL-EIP4110	4*E1 OVER 10/100Base-T+OPTICAL 10/100Base-Fx