

CuteLink E1 to Ethernet Protocol Converter

- CL-C1200 FE1-10/100Base-Tx
- CL-C1201 FE1-10/100Base-Fx
- CL-C1400 FE1-4*10/100Base-Tx



CuteLink FE1 to ETH Protocol Converter

CL-C1200

Product Overview

CL-C1200 Protocol converter is a high-performance, self-learning distant Ethernet Bridge with small size and low cost, which makes it suitable for cost-sensitive bridge connection as the LAN stretcher or separator based on the bit flow. It can study MAC destination address from the connected LAN constantly and determine whether forward or filter according to destination Mac address of data frames. Standalone and Rack mount module are both available.



Device Feature

- In accordance with the provisions of IEEE 802.3 Ethernet, ITU-T G.703, G.704 and G.823 protocols.
- E1 interface framed/unframed optional; balanced 120ohm/ unbalanced 75ohm optional.
- The E1 interface uses PCM31 mode, supporting CRC check.
- E1 interface main/ slave clock optional in the framed mode.
- In the E1 framed mode, the number of time slots is optional from 1 to 31.
- Supports 2.048Mbps transparent transmission in the E1 non-framed mode.
- The 10/100Base-T Ethernet interface supports 10/100M half/ full duplex modes.
- MAC address self-learning and address filtering functions, to reduce the transmission load of the E1 circuit.

- Built-in 64Mbits SDRAM Ethernet data buffer memory, improve the capability of Ethernet side anti-outburst, assure high throughput of data transmission.
- E1 circuit remote loop and local loop tests.
- Pseudo random sequence test, facilitating the test of E1 circuit.
- Perfect circuit test and alarm indication.
- Two architectures: stand alone and 19in chassis mount architecture (16 protocol converter modules can be inserted in the chassis mount architecture) ;
- AC 220V and DC -48V input for protocol converters of both architectures
- Hot rear up of double power supplies is provided for the protocol converters of chassis mount architecture, assuring high reliability.

Specification

Protocol: G.703, G.704, G.736, G.823, I.431 IEEE802.3

E1 interface:

Impedance: 75Ω, physical interface BNC

120Ω, physical interface RJ45

Interface rate: 2.048Mbps

Coding: HDB3

Jitter tolerance: In accord with protocol G.823

Output jitter: < 0.05UI

Transmission range: 300m (UTP) 600m (coaxial cable)

Ethernet interface:

Data Rate: 10/100Mbps auto-negotiation

Standard: Compatible with IEEE802.3

Connector: RJ-45

Full duplex auto-negotiation

Power supply:

Stand alone: 85V~264V AC input, 5V/1A output

-36V~-72V DC input, 5V/1A output

Structure:

Stand alone: 140mm (depth) x 210mm (width) x 42mm (height)

Chassis mount: 19" 4U standard casing

Other Specification:

Operation temperature: 0°C~50°C

Storage temperature: -20°C~80°C

Humidity: 5%~90% (no condensation)

CuteLink FE1 to FX Protocol Converter

CL-C1201

Product Overview



CL-C1201 Protocol converter is a high-performance, self-learning distant Ethernet Bridge with small size and low cost, which makes it suitable for cost-sensitive bridge connection as the LAN stretcher or separator based on the bite flow. It can study MAC destination address from the connected LAN constantly and determine whether forward or filter according to destination Mac address of data frames. Standalone and Rack mount module are both available..

Device Feature

1. Developed from the integrated circuit with our own property right.
2. E1 interface supports two kinds of impedance: 120 ohm balanced and 75 ohm unbalanced.
3. Offer local loop back function.
4. Easy to operate with all the setting operated in the panel.
5. Ethernet interface supports five set mode: 10M full duplex, 10M half duplex, 100M full duplex, 100M half duplex and auto-negotiation, Support VLAN
6. Select timeslot randomly to combine data transmission channel at rate up to

N*64K(N=1 to 32)

7. Desktop and rack style device have the same composition and function. Users can refit the desktop style in the rack style according to requirement, vice versa.

8. With 1*Optical Ethernet Port and 1*Electronic Ethernet Port

Specification

Protocol: G.703, G.704, G.736, G.823, I.431 IEEE802.3

E1 interface:

Impedance: 75Ω, physical interface: BNC

Impedance: 120Ω, physical interface: RJ45

Interface rate: 2.048Mbps

Coding: HDB3

Jitter tolerance: In accord with protocol G.823

Output jitter: < 0.05UI

Transmission range: 300m (UTP) 600m (coaxial cable)

Ethernet interface (FO):

155M fiber optic transceiver module, SC type

SM or MM and single or double fiber optional

Transmission range: 120 Km(SM), 2Km (MM) Standard 40 Km(SM)

Power supply:

Stand alone: 85V~264V AC input, 5V/1A output

-36V~-72V DC input, 5V/1A output

Structure:

Stand alone: 140mm (depth) x 210mm (width) x 42mm (height)

Chassis mount: 19" 4.5U standard casing

Other Specification:

Operation temperature: 0°C~50°C

Storage temperature: -20°C~80°C

Humidity: 5%~90% (no condensation)

CuteLink FE1 to 4*ETH Protocol Converter

CL-C1400

Product Overview



CL-C1400 Protocol converter is a high-performance, self-learning distant Ethernet Bridge with small size and low cost, which makes it suitable for cost-sensitive bridge connection as the LAN stretcher or separator based on the bite flow. It can study MAC destination address from the connected LAN constantly and determine whether forward or filter according to destination Mac address of data frames. Standalone and Rack mount module are both available.

Device Feature

- Developed from the integrated circuit with our own property right.
- E1 interface supports two kinds of impedance: 120 ohm balanced and 75 ohm unbalanced.
- Offer local loop back function.
- Easy to operate with all the setting operated in the panel.
- Ethernet interface supports five set mode: 10M full duplex, 10M half duplex, 100M full duplex, 100M half duplex and auto-negotiation, Support VLAN
- It has 4*Ethernet ports, support VLAN

Specification

Protocol: G.703, G.704, G.736, G.823, I.431 IEEE802.3

E1 interface:

Impedance: 75Ω, physical interface BNC

120Ω, physical interface RJ45

Interface rate: 2.048Mbps

Coding: HDB3

Jitter tolerance: In accord with protocol G.823

Output jitter: < 0.05UI

Transmission range: 300m (UTP) 600m (coaxial cable)

Ethernet interface:

Data Rate: 10/100Mbps auto-negotiation

Standard: Compatible with IEEE802.3

Connector: RJ-45

Full duplex auto-negotiation

Ports: 4Ports Support Vlan

Power supply:

Stand alone: 85V~264V AC input, 5V/1A output

-36V~-72V DC input, 5V/1A output

Structure:

Stand alone: 140mm (depth) x 210mm (width) x 42mm (height)

Chassis mount: 19" 4U standard casing

Other Specification:

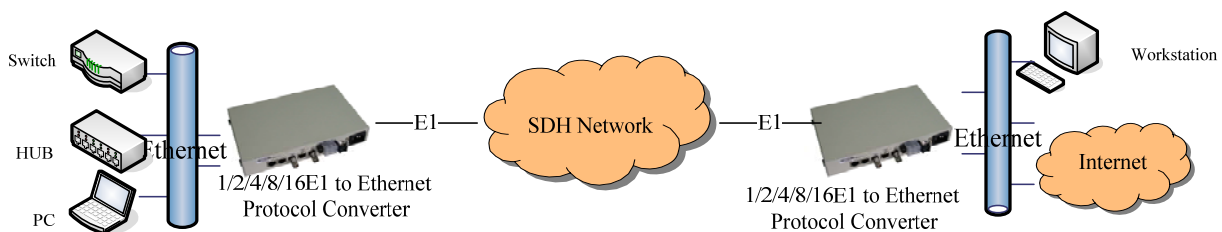
Operation temperature: 0°C~50°C

Storage temperature: -20°C~80°C

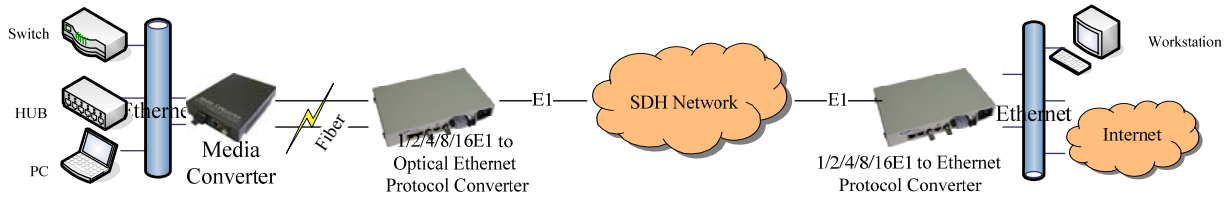
Humidity: 5%~90% (no condensation)

Application

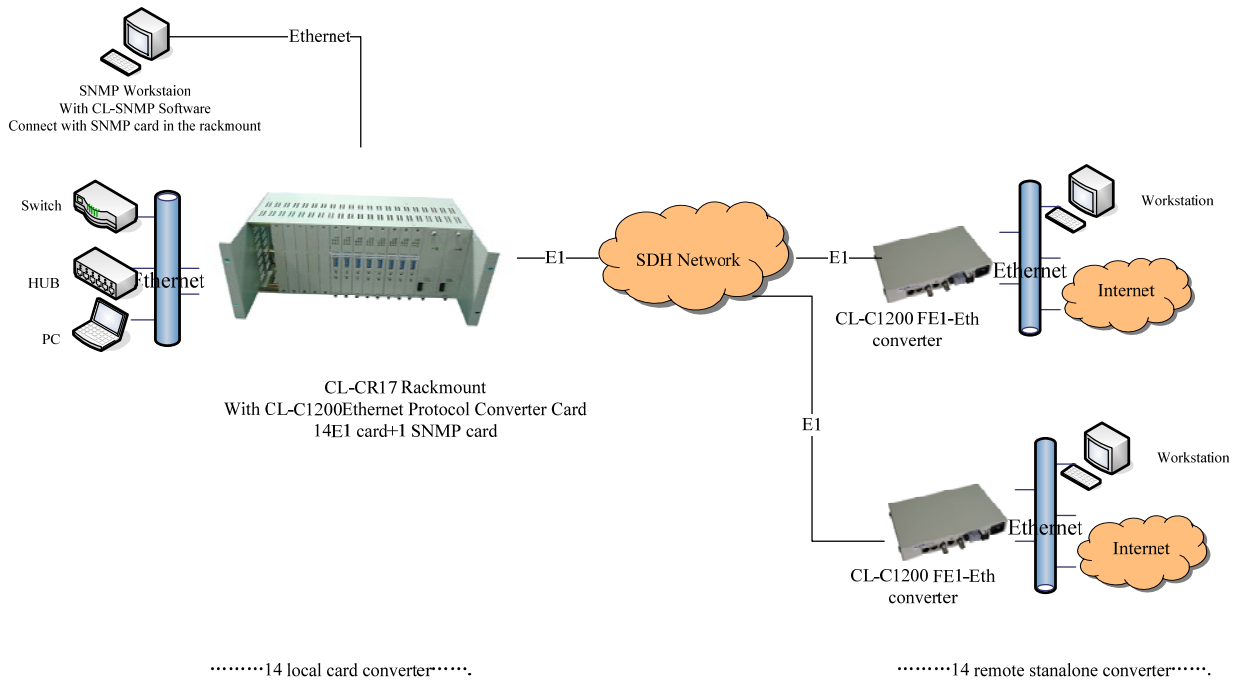
FE1 to Ethernet Application



FE1 to Optical Ethernet Application



FE1 to Ethernet Access Rackmount Application



Model

Model	Description
CL -C1200	1E1 To 1*100BASE-TX Protocol Converter, AC+DC
CL- C1201	1E1 To 100BASE-FX Protocol Converter, AC+DC
CL-C1400	1E1 To 4*100BASE-TX Protocol Converter, AC+DC, Vlan