

CuteLink FE1 to ETH Protocol Converter

CL-C1100

Product Overview

CL-C1100 FE1-10/100BASE-TX
Protocol Converter (also as



FE1-10/100BASE-TX Ethernet Bridge) is an Ethernet bridge of high performance, which accomplishes the converting between the 100M Ethernet port and the E1 port. As an extended device of the Ethernet, the FE1-10/100BASE-TX Bridge realizes interconnection of two Ethernet by using the E1 channel provided by existing networks with low cost.

Device Feature

- In accordance with the provisions of IEEE 802.3 Ethernet, ITU-T G.703, G.704 and G.823 protocols.
- E1 interface framed/unframed optional; balanced 120ohm/ unbalanced 75ohm optional.
- The E1 interface uses PCM31 mode, supporting CRC check.
- E1 interface main/ slave clock optional in the framed mode.
- In the E1 framed mode, the number of time slots is optional from 1 to 31.
- Supports 2.048Mbps transparent transmission in the E1 non-framed mode.
- The 10/100Base-T Ethernet interface supports 10/100M half/ full duplex modes.
- MAC address self-learning and address filtering functions, to reduce the transmission load of the E1 circuit.
- Built-in 64Mbits SDRAM Ethernet data buffer memory, improve the capability of Ethernet side anti-outburst, assure high throughput of data transmission.
- E1 circuit remote loop and local loop tests.
- Pseudo random sequence test, facilitating the test of E1 circuit.
- Perfect circuit test and alarm indication.
- Two architectures: stand alone and 19in chassis mount architecture (16 protocol converter modules can be inserted in the chassis mount architecture) ;

- Optional AC 220V or DC -48V input for protocol converters of both architectures
- Hot rear up of double power supplies is provided for the protocol converters of chassis mount architecture, assuring high reliability.

Specification

Protocol: G.703, G.704, G.736, G.823, I.431 IEEE802.3

E1 interface:

Impedance: 75Ω, physical interface BNC

120Ω, physical interface RJ45

Interface rate: 2.048Mbps

Coding: HDB3

Jitter tolerance: In accord with protocol G.823

Output jitter: < 0.05UI

Transmission range: 300m (UTP) 600m (coaxial cable)

Ethernet interface:

Data Rate: 10/100Mbps auto-negotiation

Standard: Compatible with IEEE802.3

Connector: RJ-45

Full duplex auto-negotiation

Power supply:

Stand alone: 85V~264V AC input, 5V/1A output

-36V~-72V DC input, 5V/1A output

Structure:

Stand alone: 140mm (depth) x 210mm (width) x 42mm (height)

Chassis mount: 19" 4.5U standard casing

Other Specification:

Operation temperature: 0°C~50°C

Storage temperature: -20°C~80°C

Humidity: 5%~90% (no condensation)



CuteLink FE1 to FX Protocol Converter

CL-C1101

Product Overview

CL-C1101 FE1-10/100BASE-FX is a high performance and self-learning long distance Ethernet Bridge that could point-to-point transfer data from E1 channels to Rj-45 interfaces and 100Mbps fiber optic interface. It is compact in size and low in cost and suitable to cost effective bridging application. It could be used as an extension or divider to LANs with bit rate base structure. This equipment could continuously learn the MAC addresses among the connected LANs and decide to transmit or filter. It has a table containing up to 10,000 addresses and it could be automatically updated. The filtering and transmitting rate is up to 20,000 frames, and the buffer could contain 256 frames, the transfer delay is 1 frame. When used as a LAN extension or divider, it works under the modes either filtering or filtering prohibited. China has an extensive resource in E1 channels and so this product is widely used in network connection.



Specification

Protocol: G.703, G.704, G.736, G.823, I.431 IEEE802.3

E1 interface:

Impedance: 75Ω, physical interface: BNC

Impedance: 120Ω, physical interface: RJ45

Interface rate: 2.048Mbps

Coding: HDB3

Jitter tolerance: In accord with protocol G.823

Output jitter: < 0.05UI

Transmission range: 300m (UTP) 600m (coaxial cable)

Ethernet interface (FO):

155M fiber optic transceiver module, SC type

SM or MM and single or double fiber optional

Transmission range: 120 Km(SM), 2Km (MM) Standard 40 Km(SM)

Power supply:

Stand alone: 85V~264V AC input, 5V/1A output

-36V~-72V DC input, 5V/1A output

Structure:

Stand alone: 140mm (depth) x 210mm (width) x 42mm (height)

Chassis mount: 19" 4.5U standard casing

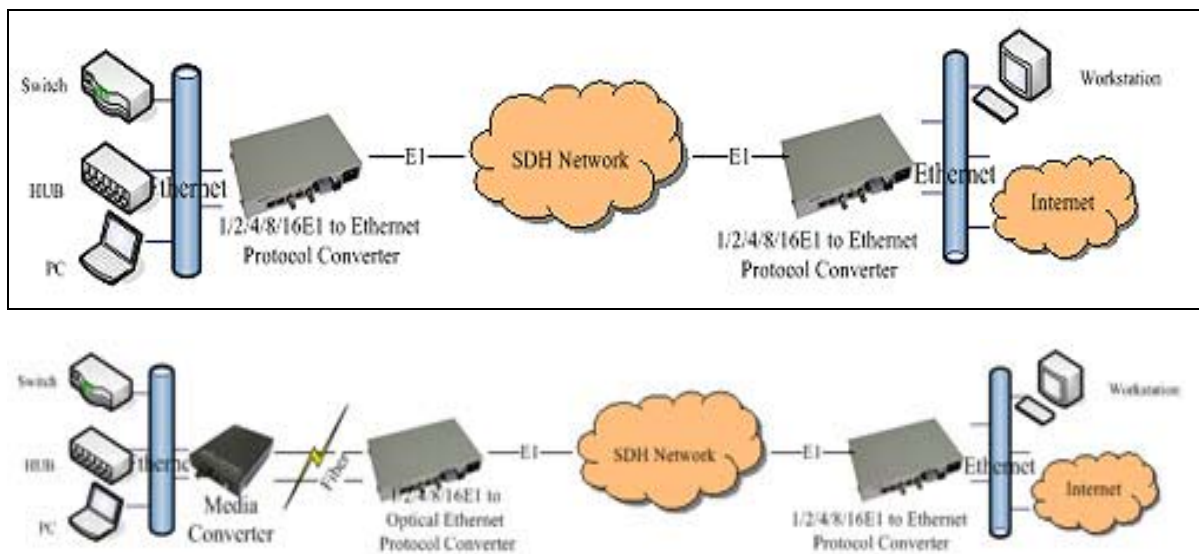
Other Specification:

Operation temperature: 0°C~50°C

Storage temperature: -20°C~80°C

Humidity: 5%~90% (no condensation)

Application



Model

Model	Description
CL -C1100	1E1 To 1*100BASE-TX Protocol Converter
CL- C1101	1E1 To 100BASE-FX Protocol Converter