

CuteLink Press

- [CL-C1400 E1 to 4*Ethernet Vlan SNMP Protocol Converter Coming](#)
Cutelink release CL-C1400 E1 to 4*Eth VLAN SNMP Protocol Converter
- [CL-FOM4104/8104/16104 SNMP NMS Update](#)
CL-FOM4104/8104/16104 4/8/16E1+4Eth+Rs232+OW Vlan SNMP OptiMux 's SNMP NMS update,
- [CL-EOP 4/8/16 4/8/16E1 to 4Eth Vlan SNMP Converter Update](#)
CL-EOP4/8/16 4/8/16E1 to 4*Ethernet SNMP NMS VLAN Dual-power Protocol Converter 's NMS update,
- [CL-VOF Voice\(FXO/FXS\)+4E1+4Eth Over Fiber OptiMux](#)
CuteLink CL-VOF Voice Over Fiber PCM Optimux is a point-to-point optical transmission equipment developed based on FPGA Chips, realizing 4E1 and 4*1Ethernet,4/8/12/16/24/30 voice (FXO,FXS.), RS232

New Star Products

CL-C1400 E1 to 4Eth Converter



CL-EOP8Mini 8E1-4Eth Converter



CL-FOM4104/8104/16104 OptiMux.

- 4E1/8E1/16E1+4Eth Optical Mux.
- SNMP NMS
- 4*Ethernet ports support Vlan
- 1+1 Optical Redundancy Backup
- AC+DC AC+AC DC+DC Dual-Power



Star Product Guide

1. CL-FOM 4/8/16E1+4Eth+Rs232+OW Vlan SNMP OptiMux NMS

CL-FOM4104,CL-FOM8104,CL-FOM16104E1+4Eth/8E1+4Eth/16E1+4Eth OptiMux. is part of Multi E1 and Fast Ethernet transmission system family, used to build a 155Mb/s optical point-to-point link. Based on an ASIC chip; it performs the transportation of 4/8/16 E1 and a fast Ethernet at full speed. It also provides an order-wire and an auxiliary UART interface for Management. The OptiMux offers a highly integrated solution for the perfect function, stable performance and convenience with low power consumption.

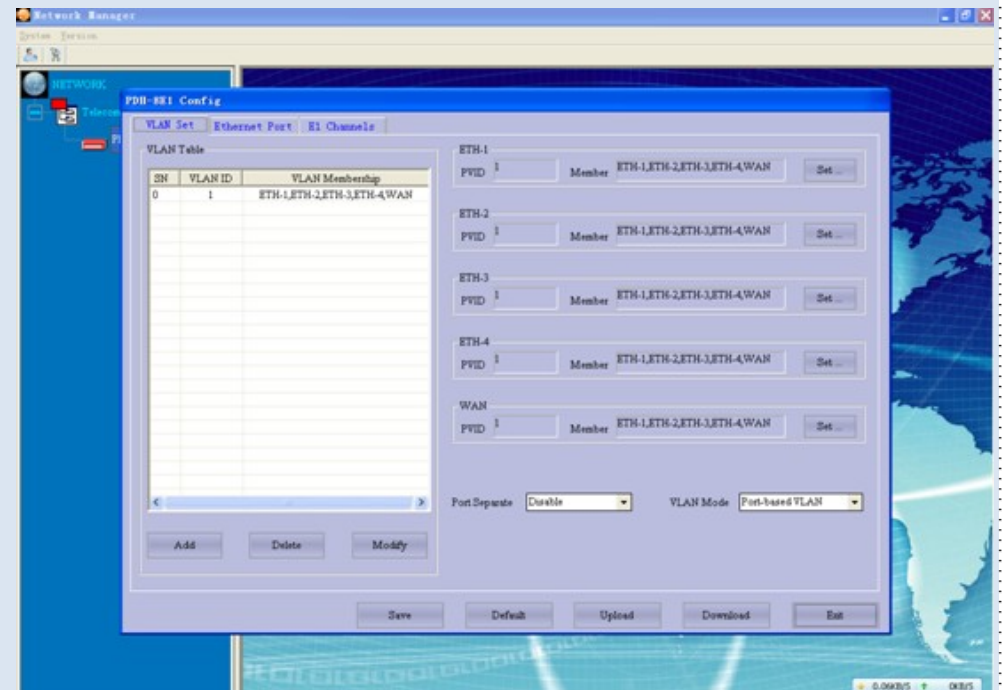


Innovative Solution

2. CL-FOM4104/8104/16104 4/8/16E1+4Eth+Rs232+OW Vlan SNMP OptiMux NMS

OptiMux offers E1 and ETH NMS, ETH NMS which can configure ETH port like intelligent L2 switch, it has followed functions:

- Separation based on port;
- VLAN based on TAG;
- Port monitoring.
- VLAN based on port;
- Flow control based on 32K (32K~100M).
- Broadcast Storm Protection, etc.

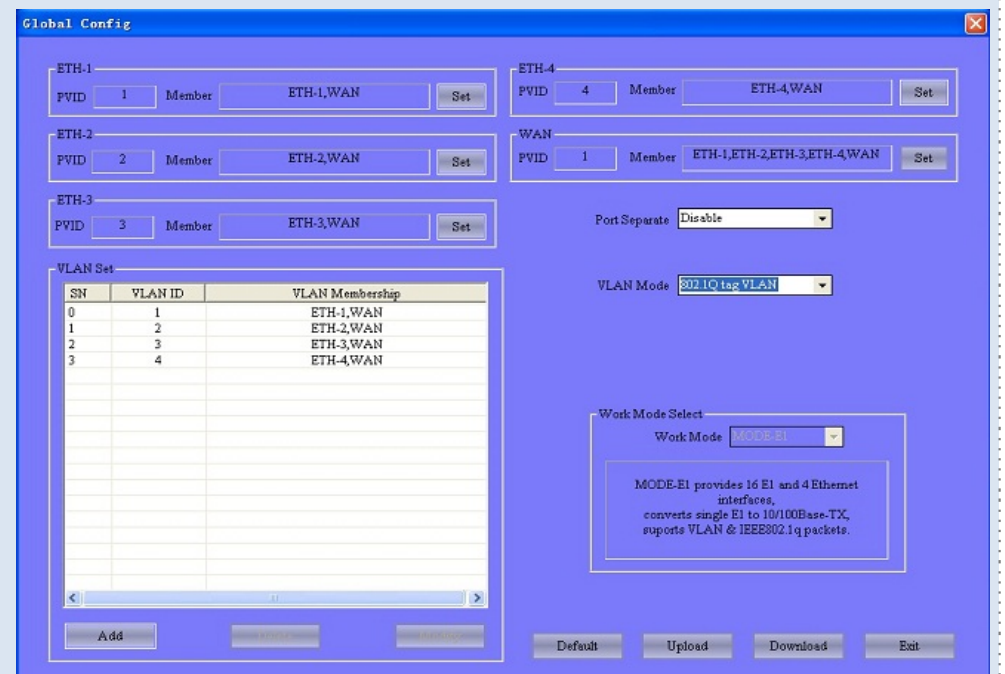


3. New ! CL-C1400 E1 to 4Ethernet Vlan SNMP Converter

- Compliant to ITU-T standards IEEE 802.3 Ethernet, ITU-T G.703, G.704 and G.823 protocols.
- E1 interface framed/unframed optional; balanced 120ohm/unbalanced 75ohm optional.
- The E1 interface uses PCM31 mode, supporting CRC check.
- E1 interface main/ slave clock optional in the framed mode.
- .In the E1 framed mode, the number of time slots is optional from 1 to 31.
- Supports 2.048Mbps transparent transmission in the E1 non-framed mode.
- The 10/100Base-T Ethernet interface supports 10/100M half/ full duplex modes.
- MAC address self-learning and address filtering functions, to reduce the transmission load of the E1 circuit.
- Built-in 64Mbits SDRAM Ethernet data buffer memory, improve the capability of Ethernet side anti-outburst, assure high throughput of data transmission.
- E1 circuit remote loop and local loop tests.
- Pseudo random sequence test, facilitating the test of E1 circuit.
- Perfect circuit test and alarm indication.
- CL-C1400 4*Ethernet support VLAN config,with SNMP NMS

4. CL-C1400 E1 to 4*Ethernet Vlan SNMP NMS

CL-C1400 EasyEth SNMP Network Management System (NMS) includes various kinds of management functions like alarm management, performance management, state management, configuration management, etc. It can fully monitor and configure VLAN Tag, QinQ Vlan, GFP,LCAS.



Thank you for your times. Thank you! More problem or question, Pls Contact with our engineer team.